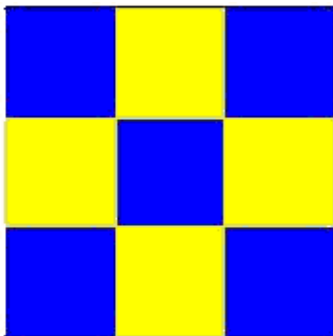


Upright image Copyright © 2025 Pace Innovations Pty Ltd. All rights reserved. Used with permission.

Installation Licence Server



SusProg3D

Suspension by Design

SusProg3D - Suspension by Design

SusProg3D - Robert D Small

All rights reserved. No parts of this work may be reproduced in any form or by any means - graphic, electronic, or mechanical, including photocopying, recording, taping, or information storage and retrieval systems - without the written permission of the publisher.

Products that are referred to in this document may be either trademarks and/or registered trademarks of the respective owners. The publisher and the author make no claim to these trademarks.

While every precaution has been taken in the preparation of this document, the publisher and the author assume no responsibility for errors or omissions, or for damages resulting from the use of information contained in this document or from the use of programs and source code that may accompany it. In no event shall the publisher and the author be liable for any loss of profit or any other commercial damage caused or alleged to have been caused directly or indirectly by this document.

Printed: June 2026

Table of Contents

Part 1 Installation and Service Start - Automatic	4
Part 2 Service Start - Manual	6
Part 3 Register Licence Server	10
Part 4 Register Network Client	16
Part 5 Event Viewer messages	17
Part 6 Updates	18
Part 7 Windows Firewall	19

1 Installation and Service Start - Automatic

- System requirements.

SusProg3D Licence Server will run on all currently supported Microsoft Windows 64-bit operating systems: Windows 10 and Windows 11.

SusProg3D Licence Server is only available as 64-bit.

All older operating systems and all 32-bit operating systems are considered obsolete.

The preferred minimum OS is Windows 10 Creators Update Version 1703 Build 15063 Released March 2017

The SusProg3D Licence Server (aka Sawdust) must be installed and started before attempting any client connections.

You will need administrator rights to be able to install and uninstall the SusProg3D Licence Server.

- Previous versions

If you are upgrading from V4 you will need to stop and uninstall the SusProg3DLS Licence Server.

To uninstall with Windows 10

Go to Start -> Settings and then under Windows Settings click on Apps.

Scroll down and find SusProg3D. Select it, and then click on Uninstall and follow the instructions.

To uninstall with Windows 11

Click on the Search icon (normally in the bottom left hand corner) and type in Uninstall and then click on "Add or remove programs".

In the "App list" type in "SusProg" and then scroll down and find SusProg3D.

Click on the "Menu" icon, and then click on Uninstall and follow the instructions.

If you are upgrading from V5 the install will replace the old version with the latest version.

There is no need to stop or uninstall the SusProg3DLS licence server.

The update can be installed over the top of the current installation.

- Installation

Download SawdustSetup.exe and save it to a temporary directory, for example C:\temp.

Run the setup executable, SawdustSetup.exe

Sawdust V5 is a 64-bit application and will install into C:\Program Files\SusProg3D\bin

If you were previously running Sawdust V4 on a Windows 64-bit system, then any shortcuts created would have a target C:\Program Files (x86)\SusProg3D\bin. You will need to change these to target C:\Program Files\SusProg3D\bin

If a previous 32-bit installation is found, click on OK to uninstall.

Follow the prompts.

Enter both the Owner Name and the Organization.

Enter the required port number. See the notes on choosing a port number. If left blank or zero, a system allocated port number will be assigned.

On the initial licence server install, the installation process will automatically:

- Copy the required files.
- Install the SusProg3D Licence Server.
- Start the Susprog3D Licence Server.

On subsequent upgrades, the installation process will automatically:

- Stop the SusProg3D Licence Server.
- Copy the required files.
- Install the SusProg3DLS Licence Server.
- Start the Susprog3DLS Licence Server.

On successful starting of the SusProg3D Licence Server the port number now in use will be displayed.

The install process should automatically perform all necessary step. In the case of manual intervention, these steps are described in Part 2.

Event viewer messages are described in Part 3.

2 Service Start - Manual

The following notes are for Windows 10 and 11 and for the equivalent Windows Server editions. Windows 10 and 11 are similar. The examples shown are for Windows 11.

These notes assume that you have installed the SusProg3D Licence Server into the default directory location, "C:\Program Files\SusProg3D".

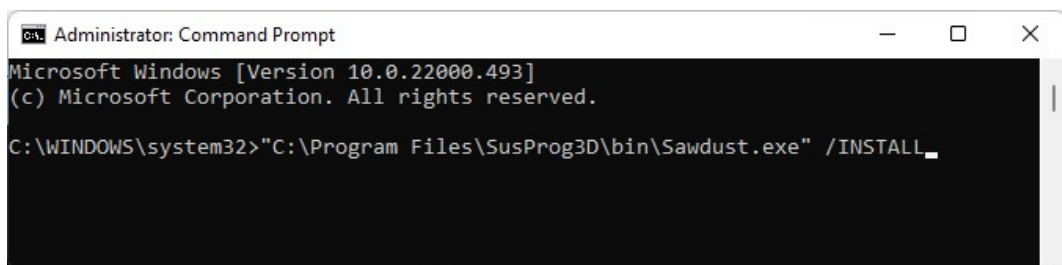
1. Manually installing the server as a service.

- Use the Command Prompt.

Windows 10: Go to Start then All Programs then Accessories. Right click on "Command Prompt" and then "Run as Administrator".

Windows 11: Go to Search and enter "Command". This should select the Command Prompt app. Click on "Run as administrator".

Enter "**C:\Program Files\SusProg3D\bin\Sawdust.exe**" /INSTALL and then OK.



```
Administrator: Command Prompt
Microsoft Windows [Version 10.0.22000.493]
(c) Microsoft Corporation. All rights reserved.

C:\WINDOWS\system32>"C:\Program Files\SusProg3D\bin\Sawdust.exe" /INSTALL_
```

If successful, you will see an information message on screen "Service installed successfully". Click OK.

If you try a second install (without having completed an uninstall) then you will get an error message on screen "The specified service already exists". Click OK.

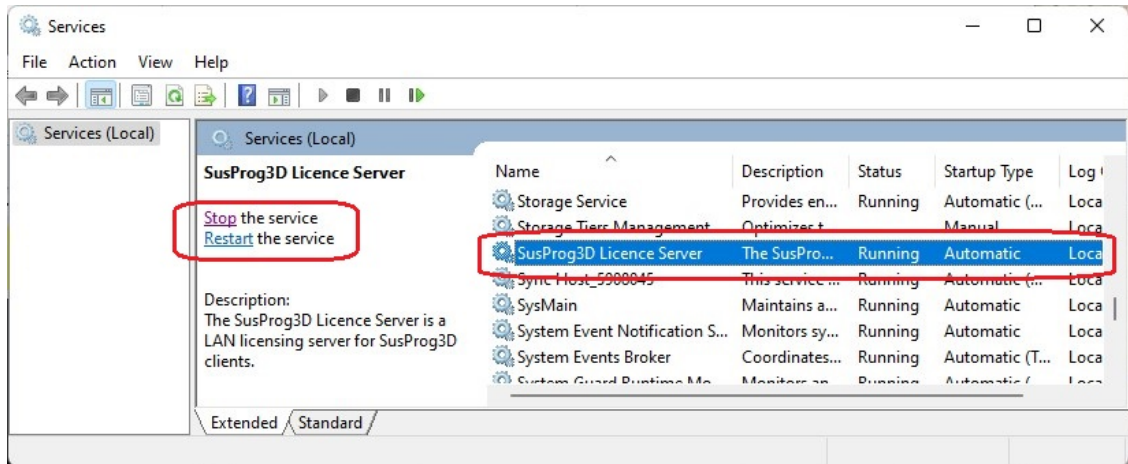
- If you wish to suppress the messages, add the /SILENT switch, like this
"C:\Program Files\SusProg3D\bin\Sawdust.exe" /INSTALL /SILENT

2. Allocate the port number and start the service.

Open the "Services" console

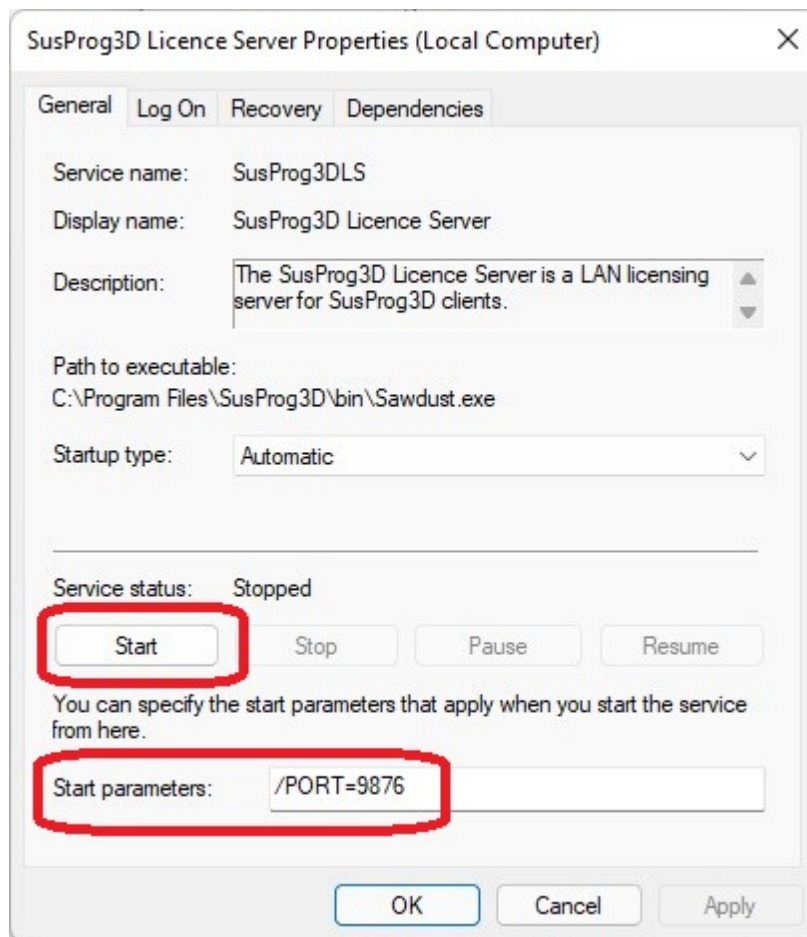
Windows 10: Go to "Start" then scroll down to "Windows Administrative Tools" then "Services".

Windows 11: Go to Search and enter "Services". This should select the Services app. Click on "Run as administrator".



The SusProg3D Licence Server can be started and stopped from here.

If you need to specify start parameters, then right click on the server name then select Properties. This will bring up the properties dialog.



There are different instructions for the first and subsequent times the SusProg3D Licence Server is started.

First time: If you have already chosen a port number.

Right click on "SusProg3D Licence Server" and then Properties.
Click on the "General" tab.

Startup type should be "Automatic"

Add a start parameter, "/PORT=#####" where ##### is the port number (without the quotes).

And then click "Start" (just above the start parameter input, on the Properties dialog)

First time: If you do not have a specific port number, and will use a system allocated number

Right click on "SusProg3D Licence Server" and then Properties.

Click on the "General" tab.

Startup type should be "Automatic"

And then click "Start" (just above the start parameter input, on the Properties dialog)

If you do not specify a port parameter, or specify /PORT=0, then the TCP/IP system will allocate the next available port number, usually between 1025 to 65355.

To avoid conflict with existing services always use a port number above 1025.

Additional information regarding port number assignments can be found at <http://www.iana.org/assignments/port-numbers>

Once you have established the port number you wish to use, you will need to reserve it for future use. This involves changing a registry setting. For full details, refer Microsoft Knowledge Base article number 812873 at <http://support.microsoft.com/kb/812873>

Second and subsequent times: If you are restarting the service, and wish to change the port number

Right click on "SusProg3D Licence Server" and then Properties.

Click on the "General" tab

Add a start parameter, "/PORT=#####" where ##### is the port number (without the quotes).

And then click "Start" (just above the start parameter input, on the Properties dialog)

Second and subsequent times: If you are restarting the service, and reuse the previous port number

On subsequent starts, the SusProg3D Licence Server it will continue to use the same port number.

If you do not need to change the port number as part of a subsequent start, then, after highlighting the "SusProg3D Licence Server" just click "Start".

3. Check the server messages.

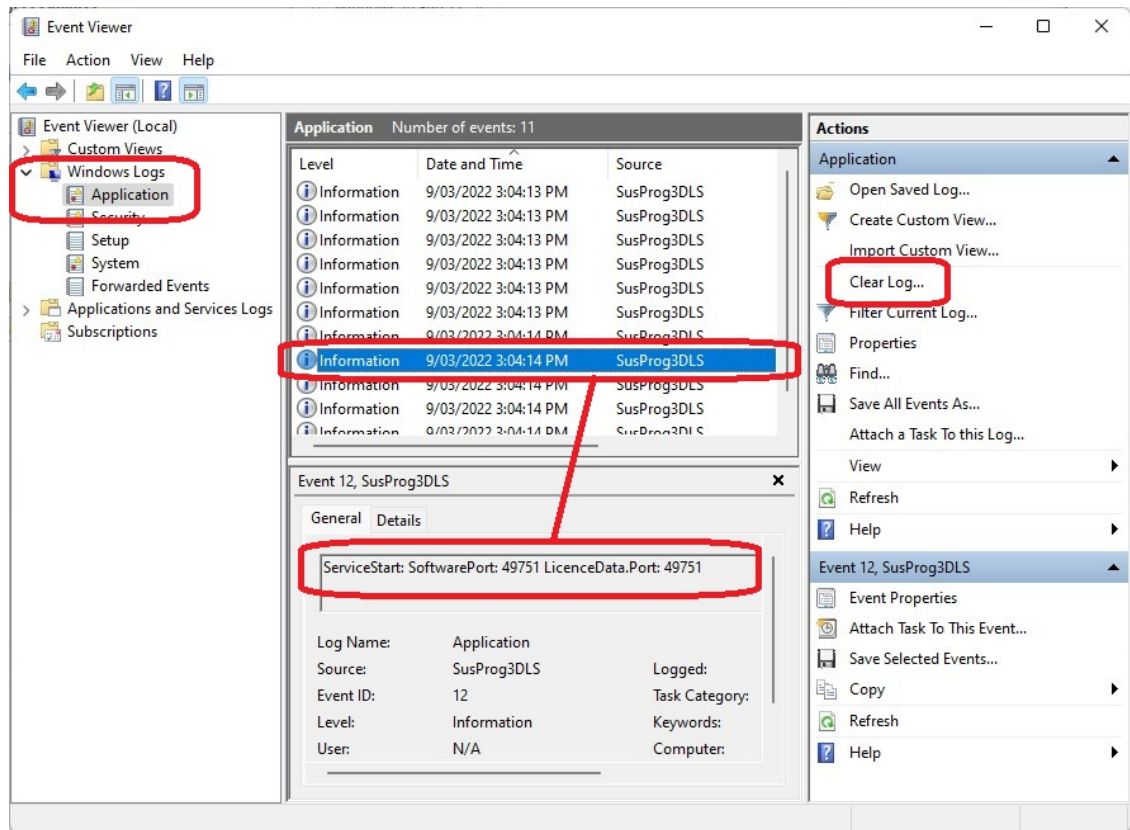
Open the Event viewer and show all application event messages.

Windows 10: Go to "Start" then scroll down to "Windows Administrative Tools" then "Event Viewer".

Windows 11: Go to Search and enter "Event Viewer". This should select the Event Viewer app. Click on "Run as administrator".

To view the SusProg3D Licence Server messages select "Windows Logs" then "Application". Click on the "Source" column to sort all the messages by source and look for "SusProg3DLS". If you did not specify a specific port number in the start parameters, then check the "Normal start" message for the port number in use.

To clear out all the messages, click "Clear Log"



4. To stop the service.

Open the Services console.

Scroll down and find "SusProg3D Licence Server". Click on "Stop"

5. To Uninstall the server as a service.

Open the Run dialog or open a Command Prompt.

Enter "**C:\Program Files\SusProg3D\bin\Sawdust.exe**" /UNINSTALL and then OK.

If successful, you will see an information message on screen "Service uninstalled successfully".

Click OK.

Under normal circumstances you only need to INSTALL and start the service once.

When the PC is shutdown it will automatically stop the service.

When the PC is restarted it will automatically restart the service, and will reuse the previous port number.

You should only need to manually stop the service, and uninstall it, when upgrades to the server are required.

You will need to note the port number that the SusProg3D Licence Server is using as the SusProg3D clients require this to connect to the licence server.

If you need to change the port number, then stop the service, specify the port number, and start the service.

3 Register Licence Server

This registration process must be done on the same PC that the SusProg3D Licence Server is installed.

The SusProg3D Licence Server service must be up and running.

Go to Start and scroll down and find SusProg3D, click on it and then click on RegisterServer and "Run as Administrator".

Register Licence Server

Server details

Owner name
Marmalade

Organization
Jam Factory

Port number
49751

Licence server version
Version 5.170A (Build 1778.0)

Server operating system
Microsoft Windows 11 Version 25H2 Build 26200

Registration details

User name

Key code
190D560E-366204-64D6D000-37EAE

CDS 5524

User code
00-00-00

CDS 000

Number of licences
0

Licence code

Server status
UNREGISTERED.

Register Server

Request OK Cancel

The Owner name and Organization are those that were entered when installing the SusProg3D Licence Server.

The port number will either be the number entered when installing the SusProg3D Licence Server or a system allocated port number.

This will usually be a number in the range 1025 to 65355

The current registration details, server status, licence server software version and the server operating system will be shown.

If the user name is not shown, or is not your preferred name, then change it.

Note that the maximum length of the user name that can be registered is 45 characters.

When each of the network client PCs connects, they will be given a user name which consists of this user name appended with the licence number, eg "Marlboro Formula SAE #3".

Both the key code and the user code have an associated check digit sequence (CDS). This is a validation check to ensure that the code is correct, and that there isn't an error (eg a missing digit, transposed digits or the like).

Make sure that the number of licences is correct.

Press Request.

Register Licence Server

Server details

Owner name
Marmalade

Organization
Jam Factory

Port number
49751

Licence server version
Version 5.170A (Build 1778.0)

Server operating system
Microsoft Windows 11 Version 25H2 Build 26200

Registration details

User name
Strawberry

Key code CDS
190D560E-366204-64D6D000-37EAE 5524

User code CDS
00-00-00 000

Number of licences Licence code
20

Server status
UNREGISTERED.

Register Server

Using your email app

- 1 Create a new message
- 2 Address it To: Register@SusProg.com
- 3 Add a Subject: SusProg3D Server Registration Update Request
- 4 Copy and Paste the following into the body of the email

```

===== SusProg3D Server Registration Request =====
= Owner name: Marmalade
= Organization: Jam Factory
= User name: Strawberry
= Key code: 190D560E-366204-64D6D000-37EAE CDS: 5524
= Number of licences: 20
=
= Sawdust Version 5.170A (Build 1778.0)
= Microsoft Windows 11 Version 25H2 Build 26200
=
===== SusProg3D Server Registration Request =====

```

Request OK Cancel

This will create the required details for registration.

You can then copy and paste the appropriate details into an email.

You can use Control-C to copy the selected text and then use Control-V to paste the information into your email.

If your owner name or user name is not the same as that used to order SusProg3D, then make sure that you include your order name so that we can identify your order.

Email the details to Register@SusProg.com

Finally, press OK to save the registration data (user name and number of licences).

=====

You will receive your new registration details by email.

Thank you for registering SusProg3D

*

* SusProg3D Licence Server Registration

*

* User name: Strawberry

* Key code: 190D560E-366204-64D6D000-37EAE CDS: 5524

* User code: F39D24-4A34791C-8DD678 CDS: 153

* Number of licences: 20

* Licence code: 70676D1B

*

* Ensure that the user name exactly matches that shown above
(including both spelling and capitalization).

* Enter the user code and then OK.

* If the registration is successful the user name will be
shown in the bottom right hand corner of the SusProg3D screen.

*

Current SusProg3D version is V5.170A (Build 1779.0)

To keep SusProg3D updated visit SusProg.com
and download the latest version.

Our policy is one of continual improvement.
We suggest that you check the SusProg web site
once a month for announcements and updates.

Check that the key code and its CDS are the same as in the new registration details.

If you have been given a new user name, then enter the new user name.

Enter the new User Code and check that the CDS matches that in the new registration details.

Check that the number of licenses is correct and enter the licence code.

Press "Register server" to save.

Register Licence Server

Server details

Owner name
Marmalade

Organization
Jam Factory

Port number
49751

Licence server version
Version 5.170A (Build 1778.0)

Server operating system
Microsoft Windows 11 Version 25H2 Build 26200

Registration details

User name
Strawberry

Key code
190D560E-366204-64D6D000-37EAE

CDS
5524

User code
F39D24-4A34791C-8DD678

CDS
153

Number of licences
20

Licence code
70676D1B

Server status
REGISTERED (20 USER NETWORK LICENCE).

Register Server

Request OK Cancel

The server status should update to "Registered".

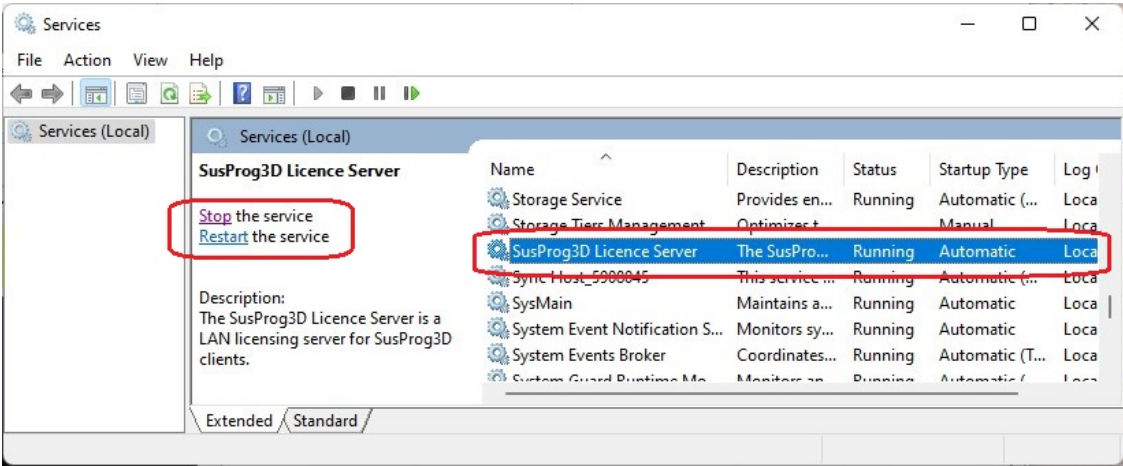
If the server does not update to "Registered" check that the data entered is correct. Check that the user name is exactly the same (including capitalization), and that both the key code and the user code are correct, including their CDS.

Then press "OK" to save the registration details.

The SusProg3D Licence Server will need to be restarted.

1. Open the "Services" console

Windows 10: Go to "Start" then scroll down to "Windows Administrative Tools" then "Services".
Windows 11: Go to Search and enter "Services". This should select the Services app. Click on "Run as administrator".

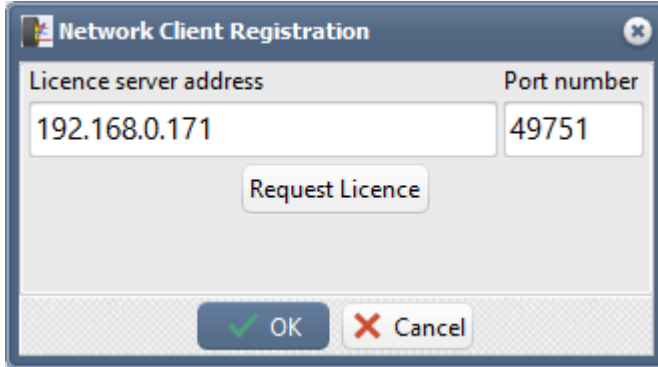


2. Restart the service.

4 Register Network Client

Before registering a Network Client, the SusProg3D Licence Server must be installed, started and registered.

Select "Settings" from the top menu bar, and then "Register Network Client".



Obtain the licence server address and the port number from your SusProg3D administrator.

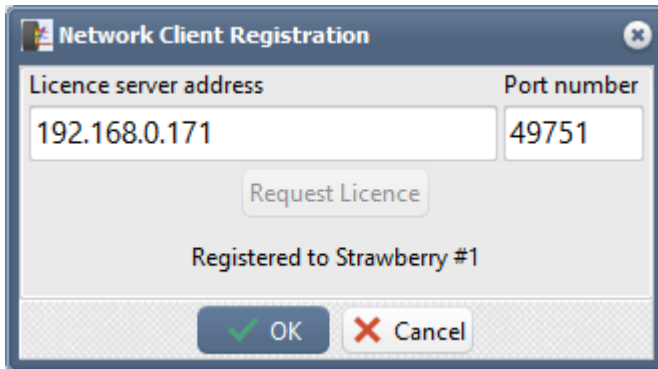
Enter the licence server address.

This will be either the server name, eg "Donald" or a dotted IP address, eg "192.168.0.171". Don't include the quotation marks.

Enter the port number.

This will usually be a number in the range 1025 to 65355

Click "Request licence".



If the SusProg3D Licence Server is running, and a free licence is available, the user name will update and display in the bottom right hand corner of the main SusProg3D screen. Then press "OK" to save the registration details.

The user name will be a concatenation of the user name as registered on the licence server and the number of the first available user licence.

5 Event Viewer messages

Category "Information" messages are usual messages and indicate appropriate server status. Category "Warning" or "Error" indicate more serious problems which require attention. The "Event number" is the message number.

There may be occasions when it is appropriate to have more extensive event messaging. To configure the additional messages; stop the service, specify a /VERBOSE start parameter, and restart the service.

Normal start. Port number N. There are M licences available.	This is the normal starting message, and displays the port number in use and the number of licences available.
Registration error	There is an error reading the servers own licence. Usually because the server has not been licenced.
Licence request received from Aaaa and allocated. N of M licences in use.	The SusProg3D client on PC "Aaaa" has requested a licence. It has been granted, and the number of licences currently in use is shown.
Licence renewal received from Aaaa and allocated. N of M licences in use.	The SusProg3D client on PC "Aaaa" is already licenced and has requested a renewal. It has been granted, and the number of licences currently in use is shown.
Licence request received from Aaaa and declined. All M licences in use.	The SusProg3D client on PC "Aaaa" has requested a licence. It has been declined because all of the available licences are currently allocated. The number of licences currently in use is shown.
Licence request received from Aaaa and declined. No licences available.	The SusProg3D client on PC "Aaaa" has requested a licence. It has been declined because there are no licences available, that is, the number of licences for this server is zero.
Licence allocated to Aaaa has been returned. N of M licences in use.	The SusProg3D client on PC "Aaaa" has exited and returned the licence to the server. The number of licences currently in use is shown.
Licence allocated to Aaaa has expired. N of M licences in use.	The SusProg3D client on PC "Aaaa" has lost communication with the server. This is either because the client PC has shut down, or the SusProg3D client has failed. The licence is returned to the server. The number of licences currently in use is shown.
Server registration updated. There are M licences available.	The SusProg3D Licence Server has been correctly registered and indicates the number of client licences available.
Server registration failed. There are no licences available	The SusProg3D Licence Server registration has failed.

6 Updates

From time to time the SusProg3D Licence Server software will be updated. These updates may be bug fixes or feature changes. Updates will be provided in the same format as the original installation, ie a full setup installation.

If you are upgrading from V4 you will need to stop and uninstall the SusProg3D Licence Server.

If you are upgrading from V5 the install will replace the old version with the latest version. There is no need to stop or uninstall the SusProg3D Licence Server. The update can be installed over the top of the current installation.

Download and run SawdustSetup.exe.

If installing the 64-bit version, and a previous 32-bit installation is found, click on OK to uninstall. Follow the prompts.

The currently assigned port number will be shown. See the notes on choosing a port number.

On subsequent updates, the installation process will automatically:

- Stop the SusProg3DLS licence server.
- Copy the required files.
- Install the SusProg3DLS licence server.
- Start the Susprog3DLS licence server.

On successful starting of the SusProg3D Licence Server the port number now in use will be displayed.

7 Windows Firewall

If you are having problems communicating from a client PC to the SusProg3D Licence Server PC, and all connections, host name and port number are correct, the problem may be the Windows Firewall on the server PC blocking the inbound and / or outbound connections.

One solution is to add the SusProg3D Licence Server to the list of exceptions.

Open up the Windows Firewall.

Windows 11

Use the Windows "Search" and search for "Firewall". Open the Windows Defender Firewall app.

Click on "Allow a program or feature through Windows Firewall"

Click on "Allow another program..." and then "Browse".

Go to the location where you installed Sawdust, usually "C:\Program Files\SusProg3D\bin" and select Sawdust.exe, then "Open".

"Sawdust.exe" should be highlighted in the list of programs. Click "Add".

"Sawdust.exe" should be added to the list of allowed programs and features.

Windows 7, 8 and 10

Go to Control Panel -> System and Security -> Windows Firewall.

Click on "Allow a program or feature through Windows Firewall"

Click on "Allow another program..." and then "Browse".

Go to the location where you installed Sawdust, usually "C:\Program Files\SusProg3D\bin" and select Sawdust.exe, then "Open".

"Sawdust.exe" should be highlighted in the list of programs. Click "Add".

"Sawdust.exe" should be added to the list of allowed programs and features.